

THE LANCET HIV

Supplementary appendix

This appendix formed part of the original submission and has been peer reviewed. We post it as supplied by the authors.

Supplement to: Pantazis N, Sabin CA, Grabar S, et al. Changes in bodyweight after initiating antiretroviral therapy close to HIV-1 seroconversion: an international cohort collaboration. *Lancet HIV* 2024; published online Aug 23. [https://doi.org/10.1016/S2352-3018\(24\)00183-8](https://doi.org/10.1016/S2352-3018(24)00183-8).

Appendix

Contents

Figure S1. Flow diagram of participant selection from CASCADE database.....	2
Figure S2. Estimated weight changes after ART initiation by ART class after exclusion of individuals initiating a TDF or efavirenz containing regimen. Shaded areas represent 95% CIs. Estimates derived from a mixed model similar to the one used in the main analysis. Results shown only for individuals with BMI in the 18.5-24.9 Kg/m ² range due to the small size of the remaining BMI groups.....	3
Table S1. Demographic, clinical and anthropometric characteristics of 5698 individuals included in the study and 1496 individuals excluded due to lack of available weight and height measurements at baseline.....	4
Table S2. Main drug in ART regimen and backbone for 5698 HIV seroconverters in CASCADE	5
Table S3. Timing and frequency of weight measurements for 5698 HIV seroconverters in CASCADE	6
Table S4. Results from two multivariable time-to-event models for the time interval between successive weight measurements: a) effect of current weight on the time to next weight measurement and b) effect of weight change (relative to previous measurement) on the time to next weight measurement.....	8
CASCADE Collaboration	9

Figure S1. Flow diagram of participant selection from CASCADE database

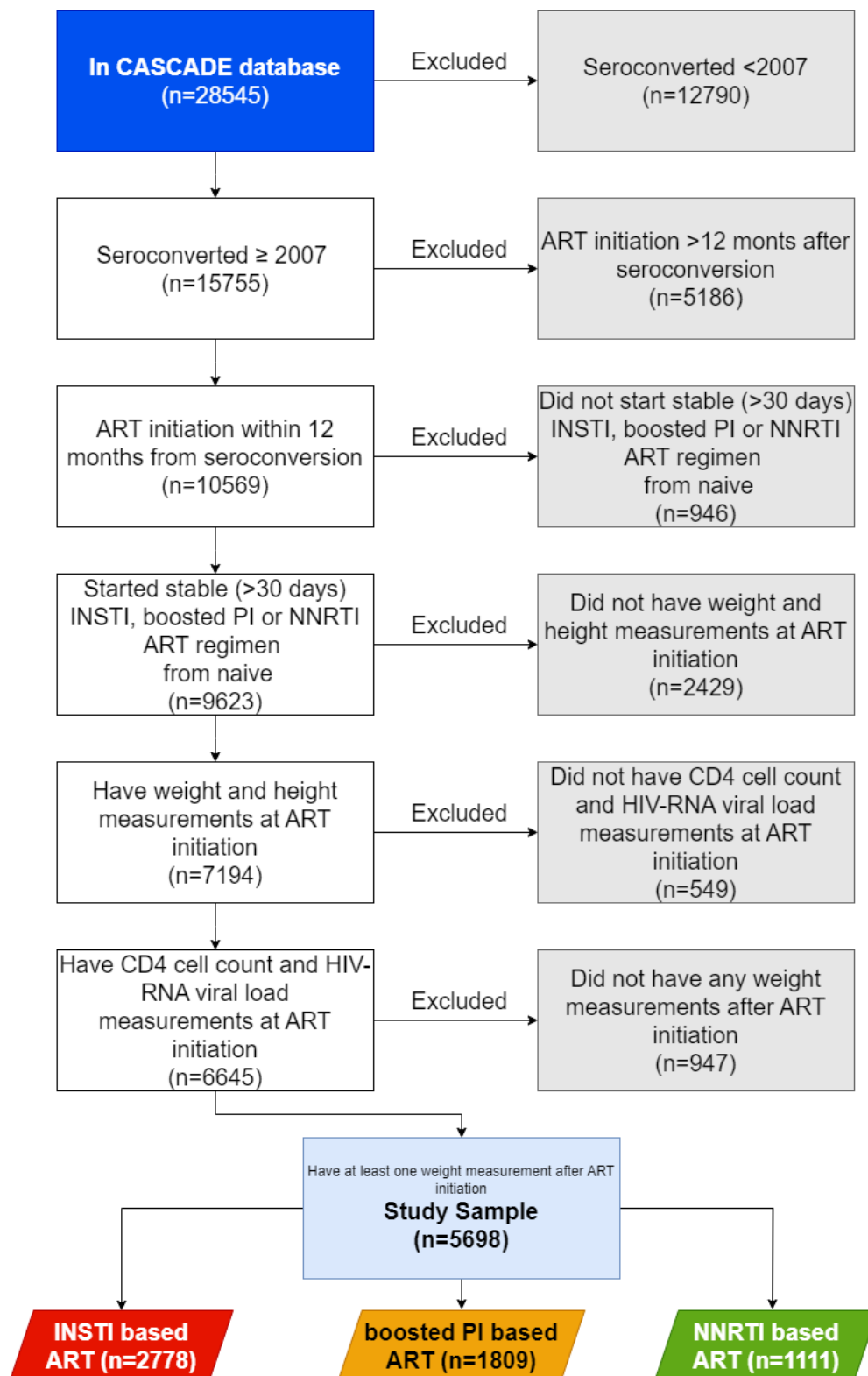
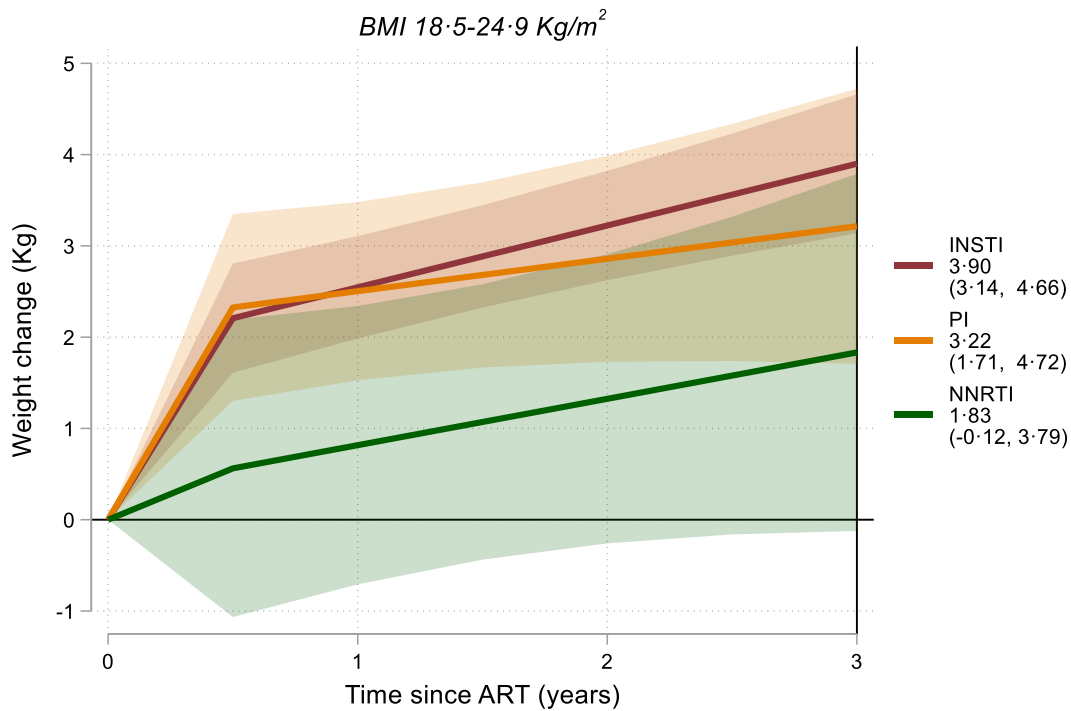


Figure S2. Estimated weight changes after ART initiation by ART class after exclusion of individuals initiating a TDF or efavirenz containing regimen. Shaded areas represent 95% CIs. Estimates derived from a mixed model similar to the one used in the main analysis. Results shown only for individuals with BMI in the 18.5-24.9 Kg/m² range due to the small size of the remaining BMI groups.



Estimates shown for men having sex with men, aged 30-39 at seroconversion, originating from Europe or North America, with average height, baseline CD4 cell count and HIV-RNA.

Table S1. Demographic, clinical and anthropometric characteristics of 5698 individuals included in the study and 1496 individuals excluded due to lack of available weight and height measurements at baseline.

Variable	Included	Excluded	p-value
Age at diagnosis, years	33.9 (27.0, 43.4)	34.0 (27.6, 43.3)	0.42
Sex at birth and probable exposure route			<0.0001
Men having sex with men	4519 (79.3%)	1150 (76.9%)	
Injecting drug use	31 (0.5%)	36 (2.4%)	
Men having sex with women	469 (8.2%)	95 (6.4%)	
Women having sex with men	492 (8.6%)	118 (7.9%)	
Unknown	187 (3.3%)	97 (6.5%)	
Region of origin			<0.0001
Europe/N. America	4338 (76.1%)	1102 (73.7%)	
Sub-Saharan Africa	474 (8.3%)	82 (5.5%)	
Latin America/Caribbean	457 (8.0%)	142 (9.5%)	
Other	429 (7.5%)	141 (9.4%)	
Unknown	0 (0.0%)	29 (1.9%)	
Year of estimated seroconversion	2015 (2012, 2017)	2016 (2013, 2018)	<0.0001
Baseline CD4 (cells/ μ L)	459 (328, 620)	470 (339, 635)	0.032
Baseline HIV-RNA (\log_{10} copies/mL)	4.9 (4.3, 5.5)	5.0 (4.3, 5.7)	0.0039

Table S2. Main drug in ART regimen and backbone for 5698 HIV seroconverters in CASCADE

Main drug	NRTI Backbone drugs				
	Emtricitabine + TDF (n=3424)	Emtricitabine + TAF (n=829)	Abacavir + Lamivudine (n=692)	Other + TDF (n=20)	Other (w.o. TDF/TAF) (n=103)
INSTI (n=2778)					
Dolutegravir	525 (45.0%)	40 (3.4%)	527 (45.2%)	5 (0.4%)	70 (6.0%)
Elvitegravir	452 (62.1%)	276 (37.9%)	0 (0.0%)	0 (0.0%)	0 (0.0%)
Bictegravir	0 (0.0%)	558 (100.0%)	0 (0.0%)	0 (0.0%)	0 (0.0%)
Raltegravir	275 (84.6%)	4 (1.2%)	15 (4.6%)	3 (0.9%)	28 (8.6%)
PI (n=1809)					
Darunavir	1196 (89.1%)	37 (2.8%)	108 (8.0%)	1 (0.1%)	1 (0.1%)
Atazanavir	251 (90.0%)	0 (0.0%)	25 (9.0%)	1 (0.4%)	2 (0.7%)
Other PI	124 (66.3%)	0 (0.0%)	20 (10.7%)	0 (0.0%)	43 (23.0%)
NNRTI (n=1111)					
Efavirenz	534 (96.7%)	0 (0.0%)	15 (2.7%)	0 (0.0%)	3 (0.5%)
Rilpivirine	430 (84.6%)	71 (14.0%)	7 (1.4%)	0 (0.0%)	0 (0.0%)
Other NNRTI	30 (58.8%)	1 (2.0%)	8 (15.7%)	11 (21.6%)	1 (2.0%)

Table S3. Timing and frequency of weight measurements for 5698 HIV seroconverters in CASCADE

a) by ART class

	INSTI n=2778 (48.8%)	PI n=1809 (31.7%)	NNRTI n=1111 (19.5%)	Overall N=5698 (100%)	p-value
Interval between seroconversion and baseline measurement (years)	0.3 (0.1, 0.4)	0.3 (0.1, 0.5)	0.4 (0.2, 0.6)	0.3 (0.1, 0.5)	<0.0001
Number of measurements	5.0 (3.0, 8.0)	5.0 (3.0, 8.0)	7.0 (3.0, 12.0)	5.0 (3.0, 9.0)	<0.0001
Average interval between measurements (months)	5.4 (3.2, 8.1)	3.3 (2.1, 5.1)	5.7 (3.8, 8.5)	4.7 (2.8, 7.3)	<0.0001
Interval between ART initiation and last measurement (years)	2.1 (0.8, 4.1)	1.1 (0.5, 2.5)	3.2 (1.1, 6.1)	1.9 (0.7, 4.0)	<0.0001

b) by baseline BMI category

Variable	<18.5 n=339 (5.9%)	18.5-24.9 n=4043 (71.0%)	25-29.9 n=1070 (18.8%)	≥30 n=246 (4.3%)	Overall N=5698 (100%)	p-value
Interval between seroconversion and baseline measurement (years)	0.3 (0.1, 0.5)	0.3 (0.1, 0.5)	0.3 (0.2, 0.5)	0.3 (0.2, 0.5)	0.3 (0.1, 0.5)	0.034
Number of measurements	5.0 (3.0, 8.0)	5.0 (3.0, 9.0)	5.0 (3.0, 9.0)	5.0 (3.0, 9.0)	5.0 (3.0, 9.0)	0.21
Average interval between measurements (months)	4.3 (2.3, 6.7)	4.7 (2.8, 7.4)	4.7 (2.9, 7.2)	4.6 (3.0, 7.3)	4.7 (2.8, 7.3)	0.11
Interval between ART initiation and last measurement (years)	1.6 (0.5, 3.6)	1.9 (0.6, 4.0)	2.0 (0.8, 4.2)	1.8 (0.7, 3.6)	1.9 (0.7, 4.0)	0.057

Table S4. Results from two multivariable time-to-event models for the time interval between successive weight measurements: a) effect of current weight on the time to next weight measurement and b) effect of weight change (relative to previous measurement) on the time to next weight measurement.

Covariate	Hazard Ratio	95% Confidence Interval	p-value
a)			
Current weight (per 1 Kg increase)	0.998	(0.997, 1.000)	0.012
b)			
Weight change (current weight relative to previous measurement) (per 1 Kg increase)	0.992	(0.989, 0.995)	<0.0001

Both models are adjusted for calendar year of seroconversion, method of seroconversion determination, age, combination of sex at birth with probable route of HIV exposure, region of origin, ART class, time of weight measurement relative to baseline, baseline CD4 cell count and baseline HIV-RNA viral load.

CASCADE Collaboration

CASCADE Executive Committee: Santiago Moreno (Chair), Fiona Burns, Rafael Eduardo Campo, Harmony Garges, Cristina Mussini, Nikos Pantazis, Moustafa Kamel, Kholoud Porter, Caroline Sabin, Shema Tariq, Giota Touloumi, Vani Vannappagari, Alain Volny Anne, Lital Young.

CASCADE Scientific Steering Committee: John Gill (co-chair), Kholoud Porter (co-chair), Christina Carlander, Rafael Eduardo Campo, Harmony Garges, Sophie Grabar, Inma Jarrín, Laurence Meyer, Moustafa Kamel, Giota Touloumi, Marc van der Valk, Vani Vannappagari, Alain Volny Anne, Linda Wittkop, Lital Young.

CASCADE Social Science Sub-Committee: Shema Tariq (Chair), Agnes Aisam, Diana Barger, Udi Davidovich, Marie Dos Santos, Lars Eriksson, Eli Fitzgerald, John Gill, Sophie Grabar, Inma Jarrín, Argyro Karakosta, Hartmut Krentz, Cristina Mussini, Emily Jay Nicholls, Nicoletta Policek, Elisa Ruiz-Burga, Chris Sandford, Bruno Spire, Inés Suárez-García, Giota Touloumi, Alain Volny Anne.

The ANRS PRIMO Cohort is supported by ANRS|MIE. The Scientific Committee comprises: Sophie Abgrall, Valerie Andriantsoanirina, Veronique Avettand-Fenoel, Christine Bourgeois, Marie-Laure Chaix, Antoine Cheret, Hugues Fischer, Cecile Goujard, Caroline Lascoux-Combe, Annie Le Palec, Laurence Meyer, Ventzislava Petrov-Sanchez, Asier Saez-Cirion, Remonie Seng, Bruno Spire, Karl Stefic, Josephine Tine.

Financial support for FHDH is through ANRS-MIE, Sorbonne Université, Inserm and the French Ministry of Health. ANRS CO4 FHDH Scientific Committee : E Piet (COREVIH Auvergne Loire); A Gagneux-Brunon, C Jacomet (COREVIH Auvergne Loire); L Piroth (COREVIH Bourgogne Franche-Comté); F Benezit, M Goussef, P Tattevin (COREVIH Bretagne); F Bani Sadr (COREVIH Grand Est); I Lamaury (COREVIH Guadeloupe); M Nacher (COREVIH Guyane); H Bazus, O Robineau (COREVIH Hauts-de-France); R Calin, C Katlama, J L Meynard (COREVIH Île de France Centre); B Denis (COREVIH Île de France Est); J Ghosn, V Joly, M A Khuong (COREVIH Île de France Nord); F Caby, E Rouveix Nordon, P de Truchis (COREVIH Île de France Ouest), S Abgrall, A Chéret, C Duvivier (COREVIH Île de France Sud), A Becker, P Miaillhes (COREVIH Lyon Vallée du Rhône), S Abel (COREVIH Martinique), G Unal (COREVIH Normandie); A Makinson, G Martin-Blondel (COREVIH Occitanie); A Morisot (COREVIH PACA-Est); S Bregigeon, P Enel (COREVIH PACA-Ouest); C Allavena, V Rabier (COREVIH Pays-de-la-Loire); H Fischer, L Vallet (Association of PWH : TRT-5 CHV); L Marchand/T Saïdi (ANRS-MIE); D Costagliola and S Grabar (Sorbonne Université, INSERM IPLESP). ANRS CO4 FHDH Steering Committee: Pr Sophie Abgrall (Béclère), Pr Pierre Tattevin (Rennes), Dr Pierre de Truchis (Garches), M Hughes Fischer (TRT-5 CHV association) and for Inserm Iplesp U1136 Dominique Costagliola (coPI), Dr Sophie Grabar (Principal Investigator).

The CoRIS cohort is supported by CIBER -Consortio Centro de Investigación Biomédica en Red- (CB21/13/00091), Instituto de Salud Carlos III, Ministerio de Ciencia e Innovación and Unión Europea – NextGenerationEU. CoRIS Executive committee: Santiago Moreno, Inma Jarrín, David Dalmau, M Luisa Navarro, M Isabel González, Federico Garcia, Eva Poveda, Jose Antonio Iribarren, Félix Gutiérrez, Rafael Rubio, Francesc Vidal, Juan Berenguer, Juan González, M Ángeles Muñoz-Fernández.

AMACS: Steering Committee: Adamis G., Chini M., Chrysos G., Marangos M., Katsarou O., Kofteridis D., Metallidis S., Panagopoulos P., Pantazis N., Papadopoulos A., Papparizos V., Papastamopoulos V., Psychogiou M., Sambatakou H. (Co-Chair), Sipsas NV., Touloumi G. (Chair). Coordinating and Statistical Analysis Center: Department of Hygiene, Epidemiology and Medical Statistics, Medical School, National and Kapodistrian University of Athens, Greece (Touloumi G., Pantazis N., Thomadakis C.).

The ATHENA database is maintained by Stichting HIV Monitoring and supported by a grant from the Dutch Ministry of Health, Welfare and Sport through the Centre for Infectious Disease Control of the National Institute for Public Health and the Environment.

The Swedish HIV Cohort InfCareHIV is managed by the InfCareHIV Steering Committee and funded by The Swedish Association of Local Authorities and Regions.

UK CASCADE: Julie Fox, Louise Terry, Anele Waters (Guy's and St Thomas Foundation Trust, Harrison wing); Alison Uriel, Andrew Ustianowski, Pamela Hackney, Niaz Fahd (Manchester University NHS Foundation Trust, North Manchester General Hospital); Sarah Fidler, Wilbert Ayap, Marcelino Molina (Imperial College Healthcare NHS Trust, St Mary's Hospital); Laura Waters, Fowsiya Nur (Central and Northwest London NHS Foundation Trust); Fiona Burns, Thomas Fernandez (Royal Free London NHS Foundation Trust); Diarmuid Nugent, Javier Pinedo (56 Dean Street Clinic, Chelsea and Westminster Hospital NHS Foundation Trust); Iain Reeves, Tracy Fong (Homerton University Hospital Foundation Trust); Jane Nicholls, Laura Cunningham, Jaydee Pangan (Cardiff Royal Infirmary); Claire Mackintosh, Louise Sharp (Western General Hospital, NHS Lothian).