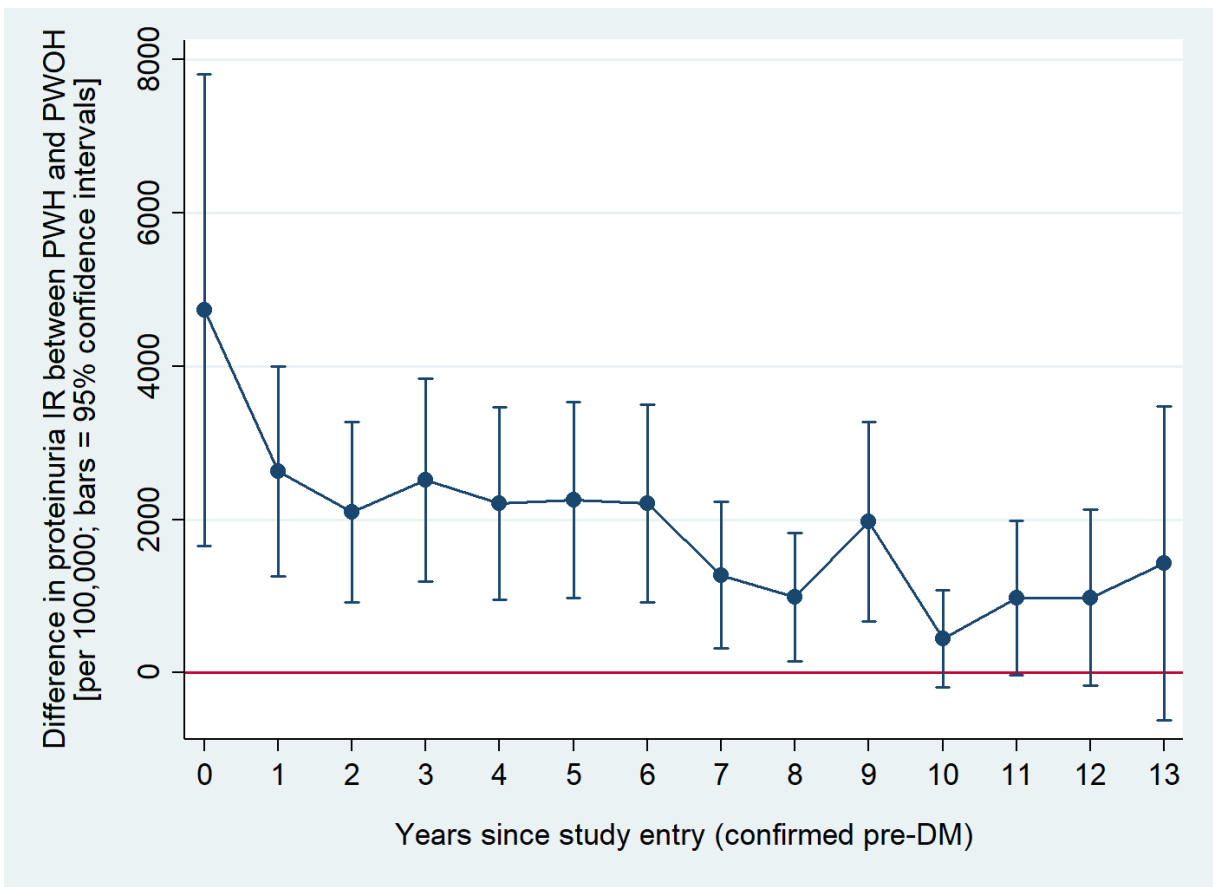


1 Supplementary Figure 1 Difference in proteinuria incidence rate (per 100,000 person-  
 2 years) over follow-up between 613 PWH with pre-DM and 663 PWOH with pre-DM  
 3 over time.  
 4



5  
 6  
 7  
 8  
 9  
 10  
 11  
 12  
 13  
 14  
 15  
 16  
 17  
 18  
 19

Model adjusts for age, race/ethnicity, education, smoking status, categorical eGFR, BMI, dyslipidemia, ACE/ARBs use, high blood pressure, and HCV infection. Red horizontal line indicates a difference in incidence rate between PWH and PWOH of 0.

ACE = Angiotensin-converting enzyme inhibitor; ARB = Angiotensin II receptor blocker; BMI = Body mass index; DM = Diabetes mellitus; eGFR = Estimated glomerular filtration rate (race-free CKD-Epi); HCV = Hepatitis C virus; IR = Incidence rate; PWH = People living with HIV; PWOH = People living without HIV.